

Benjamin E. Mays High School
3450 Benjamin E Mays Dr SW
Atlanta, GA 30331
(404) 802-5100

October 28, 2022
Report #12

THE RAIDER REPORT

Advice to students: *“Be your best self every day.”* - Dr. Mulanta Wilkins

Dear Raider Family,

Bill Belichick stated, “On a team, it’s not the strength of the individual players, but it is the strength of the unit and how they all function together.”

I want to thank each of you for the outpouring of kindness you showed me during National Principal’s Month. Our aMAYSing teachers and students showered me with celebratory gestures. Reading the thoughtful cards and mementos filled my heart with pride and joy. I was reassured of why I am eager to come to work every day.

While delighted with your acts, it is you that deserves celebrating. You lead our students with diligence and professionalism. You give your all, selflessly focusing on the team that is our school.

Andrew Carnegie claimed, “Teamwork is the ability to work together toward a common vision. The ability to direct individual accomplishments toward organizational objectives. It is the fuel that allows common people to attain uncommon results.”

A chain is only as strong as its weakest link. Together we are impactful when we operate as a unit. Our dedication and contributions to student success are our foundation. Let us continue building upon this catalyst in order to serve as a model of school excellence. This is only accomplished with your contributions.

You are valued! You are extraordinary!

Your Proud Principal,

Doc



OWN YOUR 20 sq ft

#RaiderNation (Follow us on Twitter) @APSMaysRaiders @DrWilkinsBEMHS

UPCOMING DATES:

Monday, October 31st— Friday, November 4th	• Senior Spirit Week
Monday, October 31st	• Uber Eats Lunch Day (Costume Day)
Tuesday, November 1st	• Grits & Grind (Tacky Tuesday) • Sacred Tuesday
Wednesday, November 2nd	• Movie Day (Twinsday)
Thursday, November 3rd	• Senior Social (Celebrity Day)
Friday, November 4th	• Map Testing Begins • Pregame Tailgate (Jersey Day)
Monday, Nov. 14th — Friday, Nov. 18th	• EOC Testing

Regular Bell Schedule	Advisory Schedule (Tues and Thurs)
NO ADVISORY	1st Block 8:45 – 10:05 10:08 Warning Bell
1st Block 8:45 – 10:15 10:18 Warning Bell	2nd Block 10:10 – 11:30 11:33 Warning Bell
2nd Block 10:20 – 11:50 11:53 Warning Bell	Raider Ramp-Up 11:35- 12:05 12:08 Warning Bell
3rd Block 11:55 – 2:10	3rd Block 12:10- 2:21
A-Lunch 12:15 – 12:40 Release from Lunch- 12:38 B-Lunch 12:45- 1:10 Release from Lunch -1:08 C-Lunch 1:15 – 1:40 Release from Lunch - 1:38 D-Lunch 1:45 – 2:10 Release from Lunch – 2:10 2:13 Warning Bell	A-Lunch 12:25 – 12:50 Release from Lunch- 12:48 B-Lunch 12:55- 1:20 Release from Lunch -1:18 C-Lunch 1:25 – 1:50 Release from Lunch - 1:48 D-Lunch 1:55 – 2:20 Release from Lunch – 2:20 2:23 Warning Bell
4th Block 2:15 – 3:45	4th Block 2:25 – 3:45

IMPORTANT REMINDERS!

- Every teacher should remain in the school on Sacred Tuesday (and one other day) from 4:00-4:45.
- Keep gradebooks updated by posting two grades per week.
- There are no referrals for student discipline without contacting students' parents.
- Own Your 20 Sq Feet. Encourage students to move quickly and arrive to class on time.

BENJAMIN E. MAYS HIGH SCHOOL

SENIOR WEEK

OCT 31-NOV 4TH

"Unleash the Senior Spirit"

Monday 10/31:

Uber Eats Lunch Day (Costume Day)

Tuesday 11/1:

Grits & Grind (Tacky Tuesday)

Wednesday 11/2:

Movie Day (Twinsday)

Thursday 11/3:

Senior Social (Celebrity Day)

Friday 11/4:

Pregame Tailgate (Jersey Day)

For more information, contact
Ms. Hutchens & Ms. Dia Clark

Senior Sponsors



The Mays HS Orchestra Presents....



"A Night at the Cinema"

Starring:

-The MHS Orchestra

-The MHS Dancers

-The MHS Wind Symphony



Tuesday, November 1st, 2022 6:30 p.m.

Mays HS Theater

Admission: FREE

(But donations are welcomed :-)

IB ANNOUNCEMENT



- Caught being a "THINKER": Mrs. Dawson (GREAT JOB on your usage of THE LPA for October!)
- Click [HERE](#) for strategies that demonstrate thinking!
- IB PROFESSIONAL DEVELOPMENT:
OCTOBER 28TH AND 31ST
(All teachers and instructional staff must attend during non-plc)
- Arrive 15 minutes after the bell rings for PD

PBIS

Positive Behavioral Interventions and Supports

[CLICK HERE](#) to complete this survey regarding PBIS (Mays Money).

This is a survey from the district that we need to complete in preparation with becoming an official PBIS School.



Coronation 2022 — Mr. & Miss Mays



RAIDER SPORTS

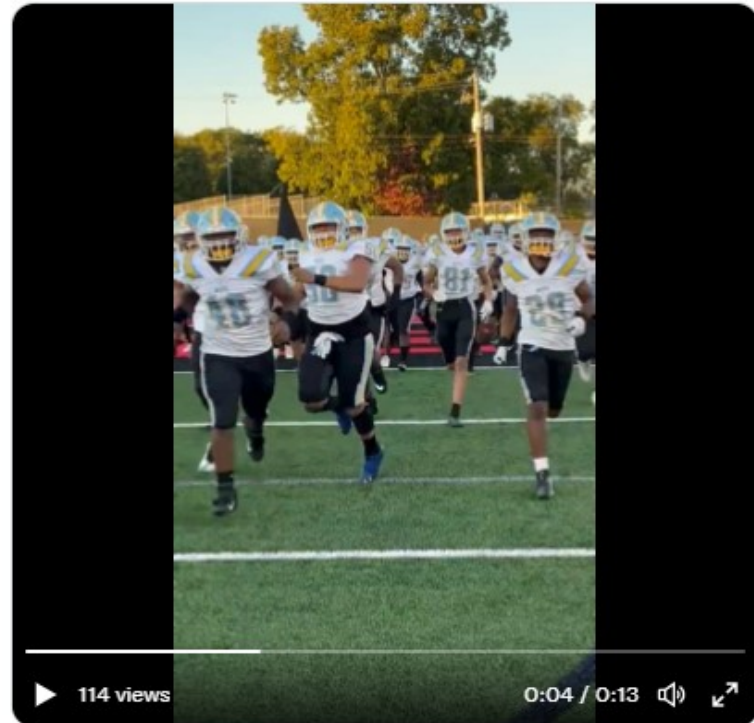
APS Mays Raiders @APSMaysRaiders · Oct 21

TOUCHDOWN RAIDERS!!!! Mays 30 - Tri-Cities 0 📌📌📌
 @DrWilkinsBEMHS @Angela_MooreAP @MsReedtheAP @DrVaughan3
 @coachtslaton12



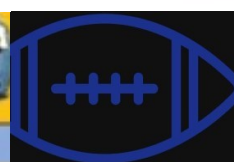
APS Mays Raiders @APSMaysRaiders · Oct 21

Raider Nation is ready to pulverize Tri-Cities. #FridayNightLights
 @DrWilkinsBEMHS @Angela_MooreAP @MsReedtheAP @1APS_Athletics
 @DrVaughan3 📌📌📌 @coachtslaton12



2022 B.E. MAYS VARSITY FOOTBALL SCHEDULE				
	OPPONENT	DAY	DATE	LOCATION
	@ L. SPRINGS JERSEY NIGHT	FRIDAY	NOV 4 7:30 PM	L. SPRINGS STADIUM
GHSA STATE FOOTBALL PLAYOFFS				
1 ST ROUND	NOV 11-12	QUARTERFINALS	NOV 25-26	
2 ND ROUND	NOV 18-19	SEMI-FINALS	DEC 2-3	
FINALS		DEC 8-10		

Winning Is An Attitude!



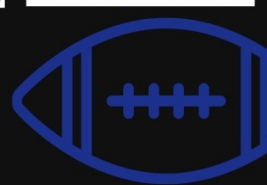
SEE MS. CONYERS OR MS. ROBINSON
 MONDAY-FRIDAY PICK UP

**CLEAR CUSTOM
 STADIUM BAGS ONLY
 \$11 AND \$13**

SUPPORT
 B.E. MAYS HIGH AND LOOK GOOD
 WHILE YOU DO IT!

\$11 Open Top

\$13 Zip Bag



Operational/Logistical

- **Take attendance during the first 15 minutes of class.** Students should remain in class during the first and last 15 minutes of class. The expectation is 100% “take rate” for attendance.
- **Hall passes are required for all students in the hallways.** Passes should include: student’s name, date, time of leaving, destination, and staff signature.
- **Duty Stations:** For all staff with a duty station, you are to report to your duty station at the appointed time. The duty report time is not the same as the arrival time to the building.
- **Class Transitions:** All staff are expected to stand in the hallway during class transitions. Help is needed to assist students with getting to class on time.
- **Headgear In Class:** It is a school-wide expectation that students don’t wear a hat or hood in the building at all. This includes in the halls and classroom. We must remain vigilant in order to ensure that we set the tone for school and remain consistent in our expectations.
- **Faculty/PLC/PL Meetings:** Unless communicated with your evaluating administrator, all meetings are mandatory. This includes ESOL and PEC personnel, as well as any supporting personnel that are in the classrooms with students.

“Whatever you do, strive to do it so well that no man living, no man dead, and no man yet to be born could do it any better!”

***— Dr. Benjamin E. Mays
(August 1894 - March 1984)***

